



THE GUARDIAN PROGRAM



OUR ELDERS ENVISIONED A PROGRAM THAT..

Strengthened our Youth's
connections to their land,
language and culture

Builds relationships to our
homelands, culture, and
original ways of knowing

Is a land-based
learning program

Delivers skill building
certifications, job and
education ready experience
within forestry and
forest stewardship



STRUCTURE OF THE GUARDIAN INITIATIVE STEERING COMMITTEE:

WAHKOHTOWIN

- General Manager
- Senior Project Manager
- Project Forester
- Guardian Program Manager
- Wildlife Biologist
- Financial Controller
- Wahkohtowin Board and Shareholders

FIRST NATION ORGANIZATIONS

- Indigenous Organizations
- Indigenous Non-Profit Organizations
- Tribal Councils

EXTERNAL GOVERNMENT AND INDUSTRY

- Organizations involved in Natural Resources, forestry, regional energy and biomass, workforce development, economic development and youth programming

GUARDIANSHIP STEERING COMMITTEE

- Allows for the shared contribution of ideas from Wahkohtowin and Committee members
- Supports and grows existing Programming
- Creates new opportunities for youth and community members
- Has the ability to pool and lever resources
- Collaborate towards a shared vision
- Strengthen, grow access and deliver support

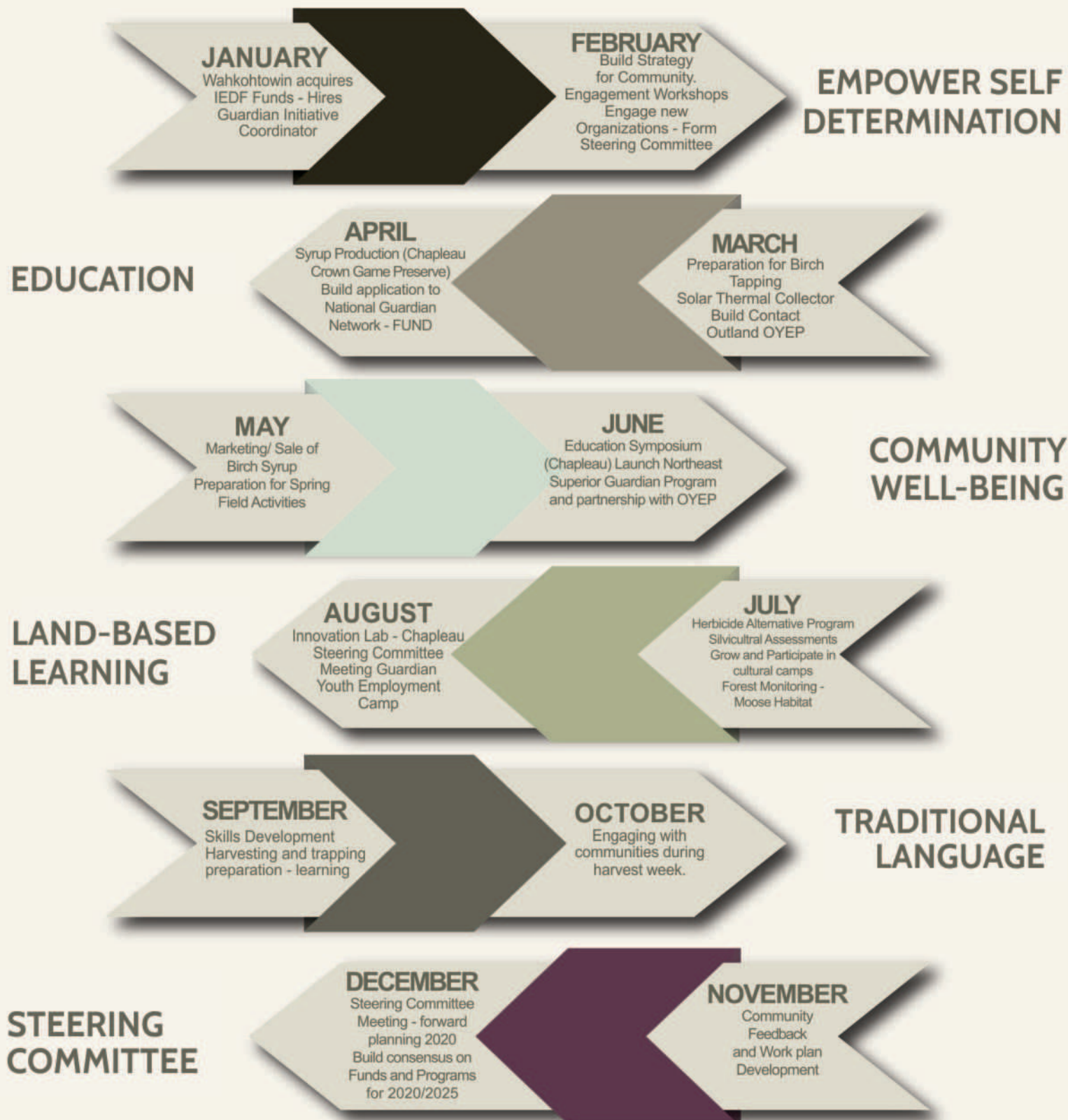


Build and Strengthen Collaboration and Efficiencies

SUPPORT FROM STEERING COMMITTEE MEMBERS:

- Attend semi - annual steering committee meetings
- Attend conference calls – when needed
- Aid in supporting or expanding existing programming and creating new opportunities
- Coordinate amongst SC Members to focus on joint applications for funding
- Participate in growing the Guardian Initiative - Programming and Learning – 5 year plan
- Contribute to the growth of Culture and Language revival and retention in our Youth and Communities

GUARDIANSHIP INITIATIVE STRATEGY



POTENTIAL GUARDIAN ACTIVITIES

JANUARY

Rabbit Snaring
Late Winter
Moose Habitat Monitoring

FEBRUARY

Snowshoeing
Ice Fishing / Net Setting
Winter Survival Classes

MARCH

Environmental Monitoring
activities (water sampling)
Community based activities

DECEMBER

Clear brush,
break trails
for winter

NOVEMBER

Tanning of hides
Traditional crafts

APRIL

Birch Syrup production
CPS training

OCTOBER

Community harvest week
Beaver trapping

MAY

Marketing of
birch syrup
Bird Banding

SEPTEMBER

Pine cone collections
Harvesting of firewood

JUNE

OYEP Camp 16-
21 Goose hunting
Net setting

AUGUST

Set up for sweat lodges
Pow-wows,
Environmental
Monitoring (SEM)

JULY

Berry Picking
Cultural Camps for
youth 4-16
Canoeing



Wahkohtowin
Development GP Inc.

ANNUAL GUARDIAN PROGRAM SPONSORSHIP TIERS

BRANCHES - \$5,000+

- Sponsors logo displayed on our sponsorship page of Wahkohtowin Website (Small)
- Recognition on public presentations regarding the Guardian Program (Small)
- One-time recognition on the Wahkohtowin Facebook page

TRUNK - \$10,000+

- Sponsors logo displayed on our sponsorship page of Wahkohtowin Website (Medium)
- Recognition on public presentations regarding the Guardian Program (Medium)
- Recognition on the Wahkohtowin Facebook page and Instagram
- 12 Medium sized Birch Syrup bottles


ROOTS - \$25,000+

- Presentation opportunity during the 6-week Guardian Program (15 minutes)
- Sponsors logo displayed on our sponsorship page of Wahkohtowin Website (Large)
- Recognition on public presentations regarding the Guardian Program (Large)
- Semi-permanent post on the Wahkohtowin Facebook page and Instagram announcing the sponsorship
- Media releases to all major media in Northeast Superior Region announcing the sponsorship
- 12 Large sized Birch Syrup bottles
- Tour of our mobile Birch Syrup Shack and operations

TO MAKE A DONATION CONTACT:

amberly@wahkohtowin.com

Cheques can be made payable to:
Wahkohtowin Development GP Inc.



**IF SUPPORTING OUR GUARDIAN PROGRAM
AND OUR INCREDIBLE YOUTH IS
SOMETHING YOU OR YOUR ORGANIZATION
IS INTERESTED IN, WE WANT TO HEAR
FROM YOU.**

THERE ARE THREE WAYS TO SUPPORT OUR GUARDIAN PROGRAM:

- 1. FINANCIAL CONTRIBUTION'S THAT WILL GO INTO EXPANDING CAMPS IN THE NORTHEAST AND SUPERIOR REGION.**
- 2. JOIN THE STEERING COMMITTEE, BRING YOUR EXPERTISE AND ADVICE.**
- 3. BRING YOUR ORGANIZATION'S PROGRAMS OR IN-KIND CAPABILITIES TO COLLABORATE WITH THE PROGRAM.**

CONTACT OUR GUARDIAN COORDINATOR

EMAIL: amberly@wahkohtowin.com